



OKLAHOMA CITY
PLANNING COMMISSION

NOTICE OF HEARING

C-6546

NOTICE IS HEREBY GIVEN, that a Preliminary Plat of Legacy Estates I has been filed on the following described property:

A part of the Northeast Quarter of Section 6, Township 12 North, Range 4 West of the Indian Meridian, Oklahoma City, Oklahoma County, Oklahoma.

Proposed Use: 143 Single Family Residential Lots on 37.57 acres

SEE MAP ON BACK

A PUBLIC HEARING will be held by the Oklahoma City Planning Commission at 1:30 p.m. on Thursday, December 12, 2013 in the Council Chambers, Third Floor, Municipal Building, 200 North Walker Avenue, Oklahoma City, Oklahoma. 73102

All property owners in the immediately surrounding areas are hereby given notice that they may inspect said application in the office of the Oklahoma City Planning Commission, 420 W. Main, Suite 910. All persons interested in presenting arguments and evidence for or against possible amendments to the proposed lots, blocks, streets and/or other details shown on the MAP should attend the referenced public hearing before the Oklahoma City Planning Commission and present such arguments and evidence at that time. It is recommended that lengthy written materials not be presented to the Commission by applicants, protestants or other persons at the Commission hearing. Lengthy written materials in support or opposition of a pending application should be submitted to the City Staff by noon on December 6, 2013 in order to be copied and delivered to the Commission members that afternoon. Graphics, brief written materials, maps, pictures, etc. may be presented to the Commission to illustrate a point regarding a case. The "MAP ON BACK" of this NOTICE OF HEARING (the "MAP"), which depicts proposed lots, blocks, streets and/or other details in the proposed Preliminary Plat of Legacy Estates I, is subject to possible amendments by the Oklahoma City Planning Commission at the referenced public hearing on the matter, and the plat actually approved by the Planning Commission at the public hearing may or may not contain the exact same lots, blocks, streets and/or other details shown on the MAP.

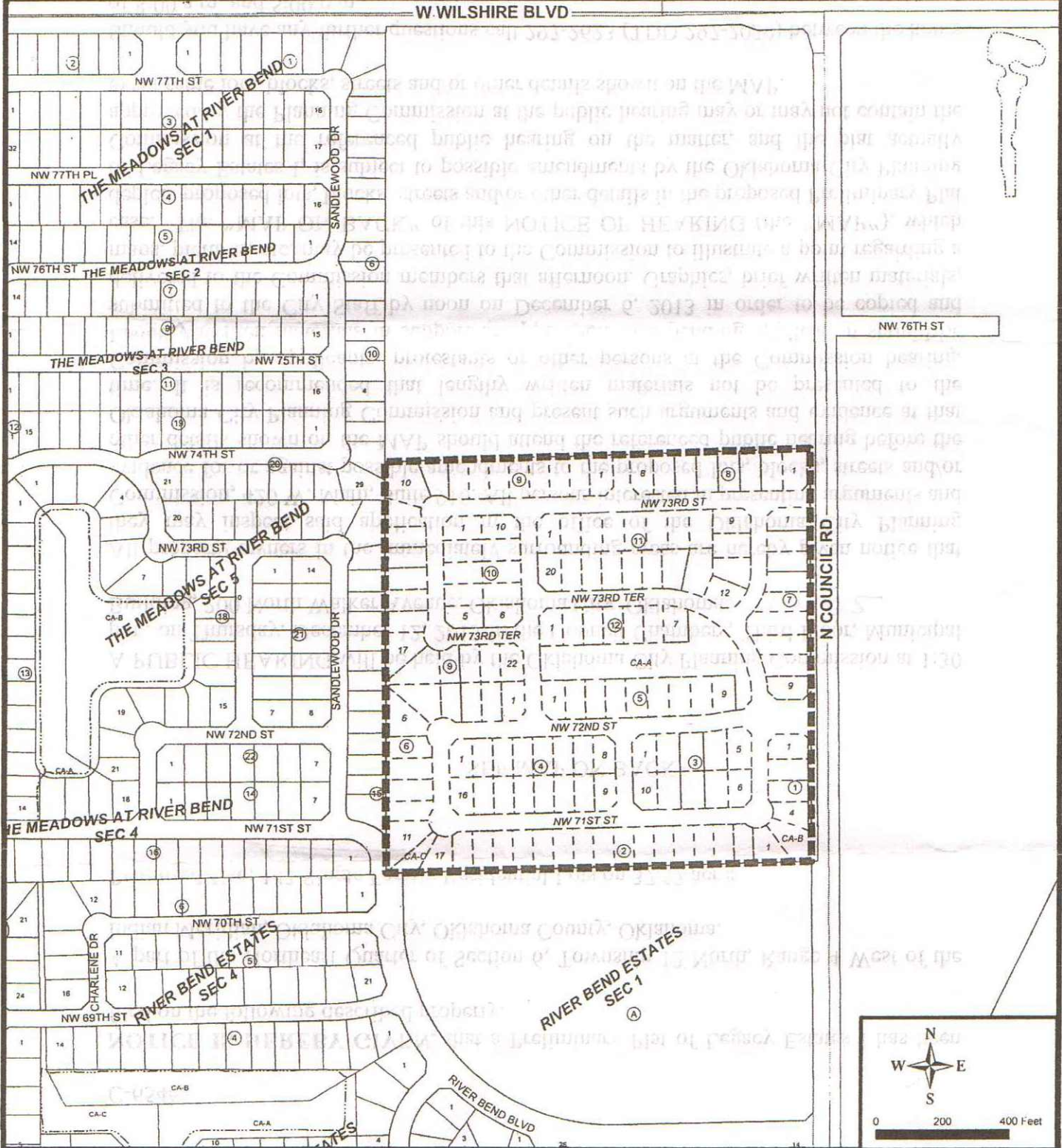
Should you have any further questions call 297-2623 (TDD 297-2020) between the hours of 8:00 a.m. and 5:00 p.m.

OKLAHOMA CITY PLANNING COMMISSION

C-6546: Preliminary Plat of LEGACY ESTATES I

Developer: Central Okla. Habitat for Humanity Construction, LLC

Engineer: Isch and Associates



NOTICE OF HEARING